

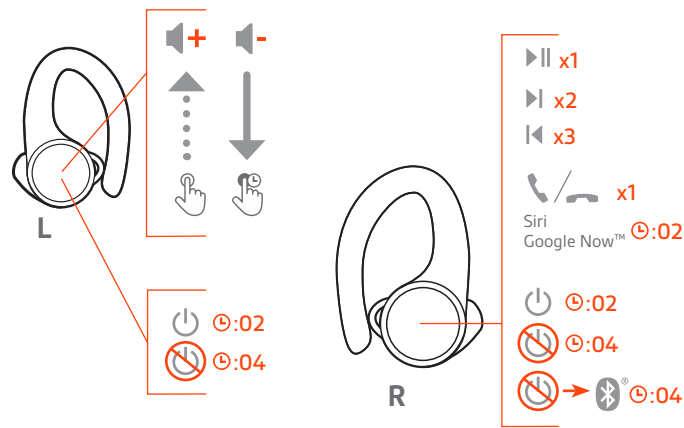
# BackBeat FIT 3200 Series

User Guide

# Contents

Controls overview	3
Power, pair and charge	4
Power on the case	4
Pair first time	4
Pair mode	4
Charge	4
Fit and audio quality	6
Install the app	7
The Basics	8
Power on/off your earbuds	8
Adjust the volume	8
Play or pause audio	8
Track selection	8
Make/Take/End Calls	8
Use Siri, Google Now	9
DeepSleep mode	9
Switch controls for better audio	9
Support	10

# Controls overview



<b>Right</b>	<b>Primary earbud (pairs to phone)</b>
▶	<b>Play/pause</b> * Click 1 time
▶▶	<b>Next track</b> * Click 2 times
◀◀	<b>Previous track</b> * Click 3 times
☎	<b>Call answer/end</b> Click 1 time
Siri/ Google Now	Click and hold 2 seconds
⏻	<b>Power on</b> Click and hold 2 seconds
⏻	<b>Power off</b> Click and hold 4 seconds
📶	<b>Pair</b> With the earbud powered off, click and hold 4 seconds
	<b>Reconnect to left earbud</b> Tap each earbud 3 times
<b>Left</b>	<b>Secondary earbud (connects to right earbud)</b>
🔊+	<b>Volume up</b> Tap to increase levels (touch sensor)
🔊-	<b>Volume down</b> Touch and hold
⏻	<b>Power on</b> Click and hold 2 seconds
⏻	<b>Power off</b> Click and hold 4 seconds
	<b>Reconnect to right earbud</b> Tap each earbud 3 times

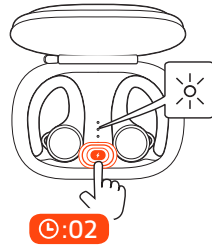
**NOTE** \*Functionality varies by application. May not function with web-based apps.

# Power, pair and charge

## Power on the case

Your charge case is shipped from the factory in a Deepsleep mode to conserve battery. Power on your charge case to power your earbuds for first use.

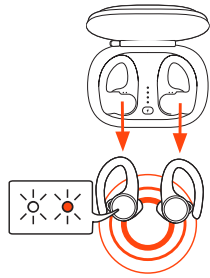
Click and hold the charge case button for two seconds to power it on. The charge case LEDs light up.



## Pair first time

The first time you take your earbuds out of the charge case, the pairing process begins.

- 1 Take the earbuds out of the case. The LED, located on the right earbud, flashes red and white to indicate pairing mode.



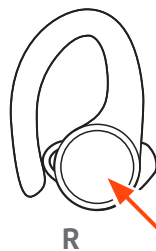
- 2 Activate Bluetooth® on your phone and set it to search for new devices.
  - **iPhone Settings > Bluetooth > On\***
  - **Android™ Settings > Bluetooth: On > Scan for devices\***

**NOTE** \* Menus may vary by device.

- 3 Select "PLT BBFIT31XX Series."  
Once successfully paired, you hear "pairing successful" and the earbud LED stops flashing.

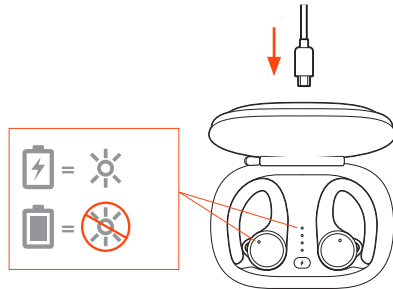
## Pair mode

With the headset powered off, click and hold the right earbud until you hear "pairing."



## Charge

To charge your earbuds, place them in the charge case. Charge the case by plugging it into a computer or USB charging device. For fastest charging, plug them into a wall charger.



**NOTE** *If the charge case has no charge, first charge the case separately, then charge the earbuds.*

---

LEDs on earbuds/case

---

Earbuds charging    On

---

Case charging    Flashing

---

Earbuds fully charged    Off

---

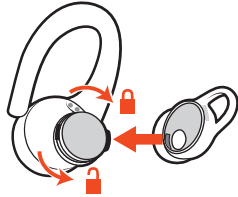
Case fully charged    Off

---

# Fit and audio quality

For the best audio, a good seal with your ear canal is essential. Try on the three different sized eartips to find which one fits you best. You may end up with a different size eartip in each ear for the best fit.

- 1 **Remove the eartip** Push in the eartip and rotate it to the left to unlock.



- 2 **Replace the eartip** Align the new eartip and rotate it to the right to lock.
- 3 **Try it out** Put the earbuds in your ears and make sure the stabilizing loop is tucked securely in your ear for stability. Listen to your favorite song while trying out each eartip and select the one that gives you the best fit and sound.

# Install the app

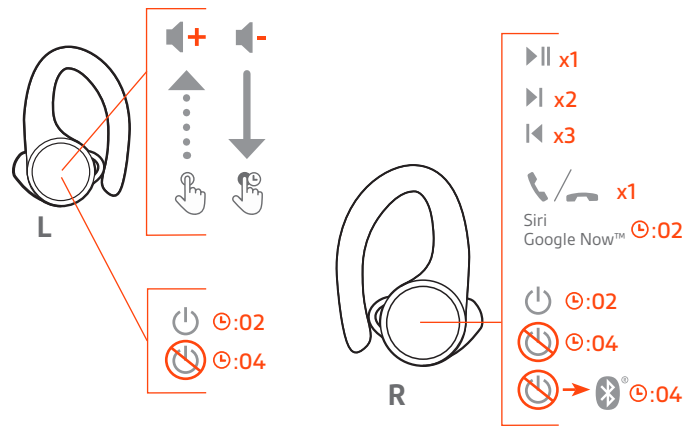
Get the most from your earbuds by downloading our free app, BackBeat for iOS/Android.

With this app, you can:

- Stream a playlist, use a stopwatch, customize volume settings and more on your earbuds (My Tap)
- Change earbud language
- Turn settings on/off
- Switch earbud controls from the right earbud to the left earbud
- Find MyHeadset
- View the user guide



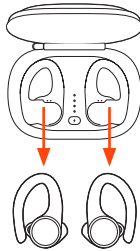
# The Basics



## Power on/off your earbuds

You can automatically or manually power on/off the earbuds.

- **Automatic** Taking the earbuds out of the case, automatically powers your earbuds on. Conversely, putting them back in the case automatically powers them off and starts charging them.



- **Manual** Click and hold the earbud button for 2 seconds to manually power it on. To manually power them off, click and hold for four seconds.  
**NOTE** Turning off the right earbud, turns off the left earbud. To power on, power the earbuds on individually.

### Power transfer

If your right earbud loses power, all functions and audio transfers to the left earbud.

## Adjust the volume

The left earbud has a touch sensor button. Only a light touch is required.

- 1 **To increase volume**, tap the left earbud.
- 2 **To decrease volume**, touch and hold the left earbud.

## Play or pause audio

Click the right earbud.

**NOTE** Functionality varies by application.

## Track selection

Double-click the right earbud to skip to the next track or triple-click the right earbud to play the previous track.

**NOTE** Functionality varies by application. May not function with web-based apps.

## Make/Take/End Calls

### Answer or end a call

Click the right earbud.



### Answer a second call

First, click the right earbud to end current call, then click the right earbud again to answer new call.

### Use Siri, Google Now

Your earbuds support Virtual Personal Assistants (VPA) such as Siri and Google Now.

Click and hold the right earbud for two seconds to use your device's VPA.

### DeepSleep mode

If you leave your earbuds powered on but out of range of your paired device, they conserve power by entering DeepSleep mode after 120 minutes and power off mode after 7 days.

To exit DeepSleep mode, choose:

- **After 120 minutes**, power on each earbud.
- **After 7 days**, reset by powering off and on.

### Switch controls for better audio

For best Bluetooth performance, keep your phone/audio device on the same side of your body as the primary earbud.

Your right earbud is the primary earbud by default. It pairs to your phone/audio device and the left earbud automatically connects to the right.

If you prefer having your phone/audio device on the left side of your body, use the Switch Primary Earbud feature in the BackBeat app to make the left earbud the primary earbud. This moves the Bluetooth connection as well as primary controls to the left earbud and move the volume and My Tap controls to the right earbud.

# Support

## NEED MORE HELP?

[plantronics.com/support](https://plantronics.com/support)

**Plantronics, Inc.**

345 Encinal Street  
Santa Cruz, CA 95060  
United States

**Plantronics B.V.**

Scorpius 171  
2132 LR Hoofddorp  
Netherlands

© 2019 Plantronics, Inc. BackBeat and Plantronics are trademarks of Plantronics, Inc. registered in the US and other countries, and Plantronics Hub is a trademark of Plantronics, Inc. Bluetooth is a registered trademark of Bluetooth SIG, Inc. and any use by Plantronics, Inc. is under license. All other trademarks are the property of their respective owners.

Patents pending.

215737-06 (08.19)